

SCHIRALLI

TEAM | INVALUABLE
REAL ESTATE INTEL



360 CLAREMONT CRESCENT
OAKVILLE

360 CLAREMONT CRESCENT

Enjoy life in a fabulous, established neighbourhood with mature tree-lined streets and walking access to Joshua’s Valley Park, Annapolis Park, Arkendo Park, and scenic Lake Ontario trails. This location is ideal for commuters, with easy access to transit, major highways, and both Oakville and Clarkson GO Stations. Located in the coveted Oakville Trafalgar High School catchment, with numerous private schools nearby.

Set on a quiet crescent, 360 Claremont Crescent is a showpiece of modern family living — where luxury finishes meet everyday function in all the right ways. This beautifully renovated home offers 4+1 bedrooms, 2 full bathrooms, and 2 powder rooms, with approximately 2,524 square feet above grade and an additional 1,315 square feet on the finished lower level, for a total of nearly 4,000 square feet of living space. Custom renovation in 2022 by Atria Fine Homes, the home reflects thoughtful design, premium materials, and exceptional craftsmanship throughout.

It was completely transformed with quality, storage, and livability in mind. From the custom cabinetry throughout to solid core interior doors, and brand new staircases, no detail was overlooked.

At the heart of the home is a stunning chef’s kitchen, featuring Wolf and Sub-Zero appliances, a Caesarstone waterfall island with hidden storage, an appliance garage, pull-out lower drawers, under-cabinet lighting, and motorized blinds. Tucked just off the kitchen, the butler’s pantry adds function and flair with a built-in beverage fridge and extra cabinetry for effortless entertaining. The mudroom is thoughtfully designed with custom built-ins, including a bench with drawers, overhead cubbies, and a full-height closet. With direct access to the garage, it’s a seamless and stylish transition space built for busy family life.

The family room opens to the backyard through dramatic 16-foot sliding doors, and is anchored by a sleek electric fireplace, custom millwork, and motorized blinds. The dedicated office space includes built-in cabinetry and a stunning LED-lit quartzite accent wall. The main floor laundry room offers both beauty and function, with quartz counters, a full-length quartz backsplash, custom cabinetry, tiled flooring, hanging racks, and built-in cubbies for laundry baskets.

The primary suite offers a bright, airy retreat with a wall of black-framed windows and space for both a king-sized bed and a sitting area. It features two custom walk-in closets with built-in drawers and full-height cabinetry. The spa-like ensuite includes a frameless glass shower, double vanity, luxurious soaker tub, elegant fixtures, and timeless finishes. Three additional generously sized bedrooms complete the upper level, each featuring smooth ceilings with pot lights and white oak hardwood flooring. A second full renovated bathroom serves the additional bedrooms with ease.

The fully finished lower level extends the living space with a large recreation room, a fifth bedroom, powder room, and two storage rooms, along with a crawl space and utility room. A new subfloor and carpet were added, and the walls and rim pockets were spray foam insulated for maximum comfort and efficiency.

The exterior of the home was thoughtfully updated in 2022 to reflect the same attention to detail found inside. A modern new front door sets a sophisticated tone upon arrival. All soffits, flashing, downspouts, and pot lights were replaced to create a crisp, streamlined profile. Black-framed windows were installed throughout the main and upper levels — finished black on both the interior and exterior for a sleek, cohesive look.



theschiralliteam.com

FRONT EXTERIOR & AERIAL VIEW

360 CLAREMONT CRESCENT



FOYER



OFFICE



360 CLAREMONT CRESCENT

KITCHEN & DINING ROOM



360 CLAREMONT CRESCENT



360 CLAREMONT CRESCENT

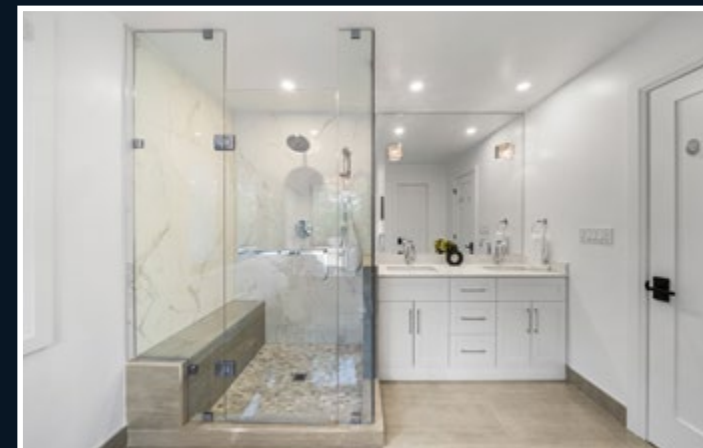
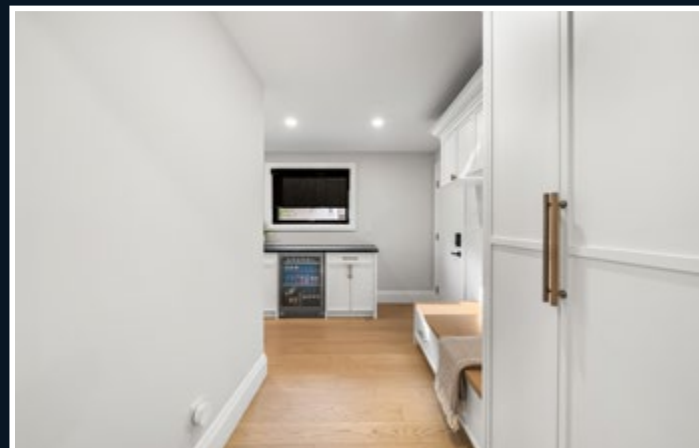
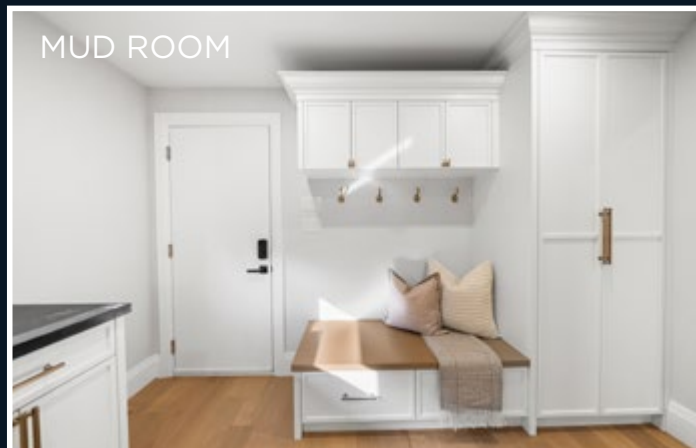
BUTLER'S PANTRY AREA



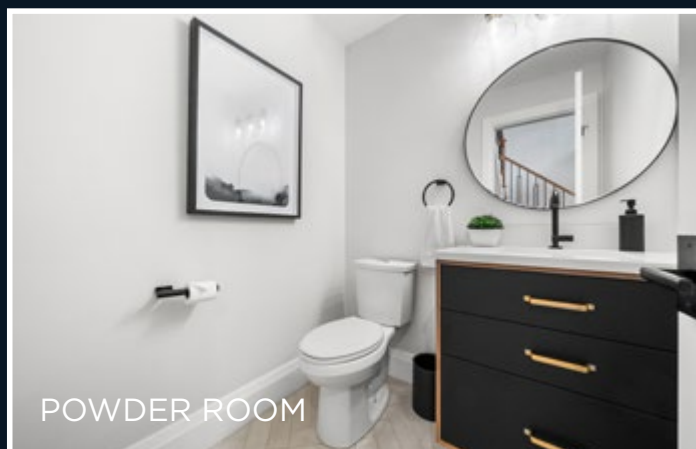
PRIMARY SUITE



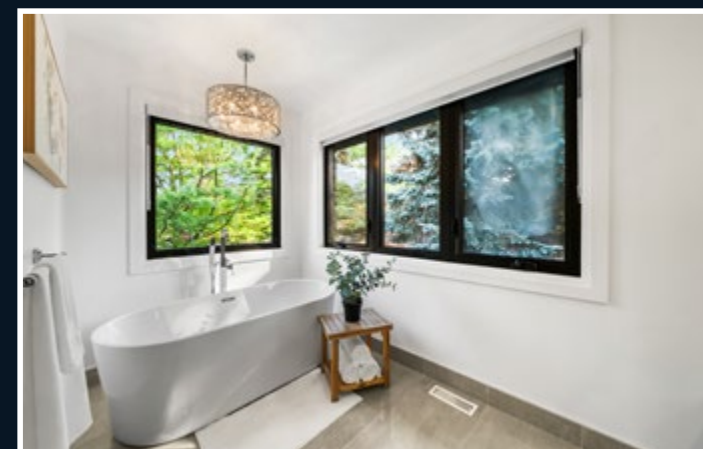
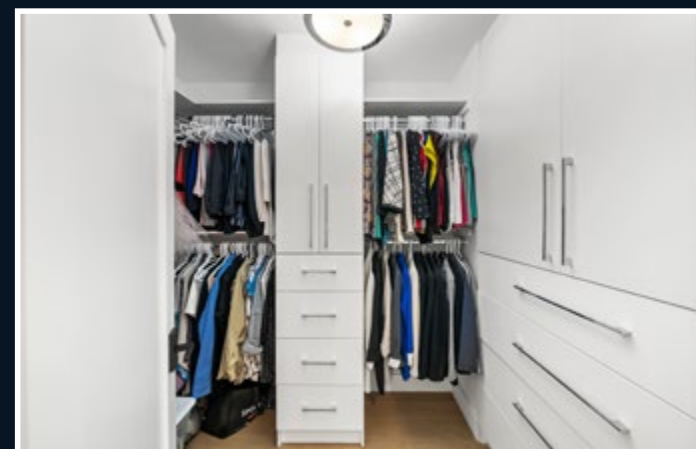
MUD ROOM



POWDER ROOM



LAUNDRY ROOM

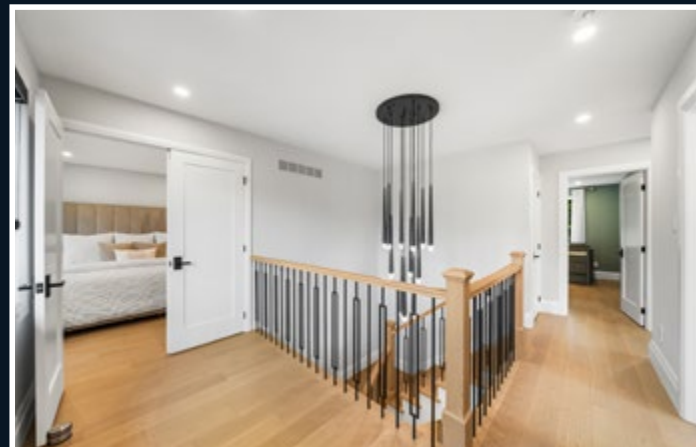
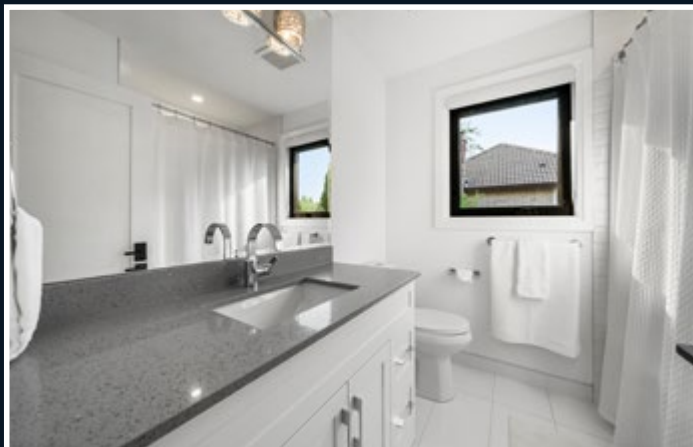


360 CLAREMONT CRESCENT

ADDITIONAL BEDROOMS & MAIN BATHROOM



LOWER LEVEL REC ROOM



360 CLAREMONT CRESCENT



PRIVATE BACKYARD

360 CLAREMONT CRESCENT



360 CLAREMONT CRESCENT

PROPERTY FEATURES

RENOVATION

- Completed in 2022 by Atria Fine Homes
- All cabinetry custom built-in

KITCHEN

- Premium Wolf / Sub-Zero appliances
- All lower cabinets upgraded to pull-out drawers
- Ample storage and cabinetry
- Appliance garage
- Beverage fridge in mudroom/servery
- Large island with hidden cabinets
- Caesarstone quartz counters with waterfall backsplash
- Under-cabinet lighting
- Motorized blinds
- White oak hardwood flooring

APPLIANCES

- Gas Range: Wolf
- Speed Oven / Microwave: Wolf
- Wall Oven: Wolf
- Hood Fan: Elica
- Beverage Fridge: Zephyr Beverage Center
- 30” Fridge: Wolf (custom panels, internal water dispenser)
- 30” Freezer: Wolf (custom panels, internal ice maker)
- Dishwasher: Bosch
- Washing Machine: LG
- Dryer: LG

MUD ROOM

- Direct access created to garage
- Custom bench with drawers & overhead cubbies
- Custom closet

FAMILY ROOM

- 16 ft sliding doors
- Motorized blinds
- Custom built-in cabinetry
- Electric fireplace

LAUNDRY ROOM

- Custom cabinetry with full-length quartz backsplash
- Quartz countertops
- Tiled floors
- Large rack & two wall racks for hang drying
- Custom cubbies for laundry baskets

POWDER ROOM

- Fully renovated

OFFICE

- Built-in cabinetry
- LED-framed feature quartzite accent slab

SECOND FLOOR

- Smooth ceilings with pot lights throughout
- White oak hardwood
- Striking multi-pendant chandelier over staircase

BASEMENT

- 1 bedroom and powder room
- Two storage closets + crawl space + utility room
- New subfloor and carpet (2022)
- Spray foam insulation:
 - Rim pockets: R-20, 2lb closed cell
 - Exterior walls: R-20, 2lb closed cell

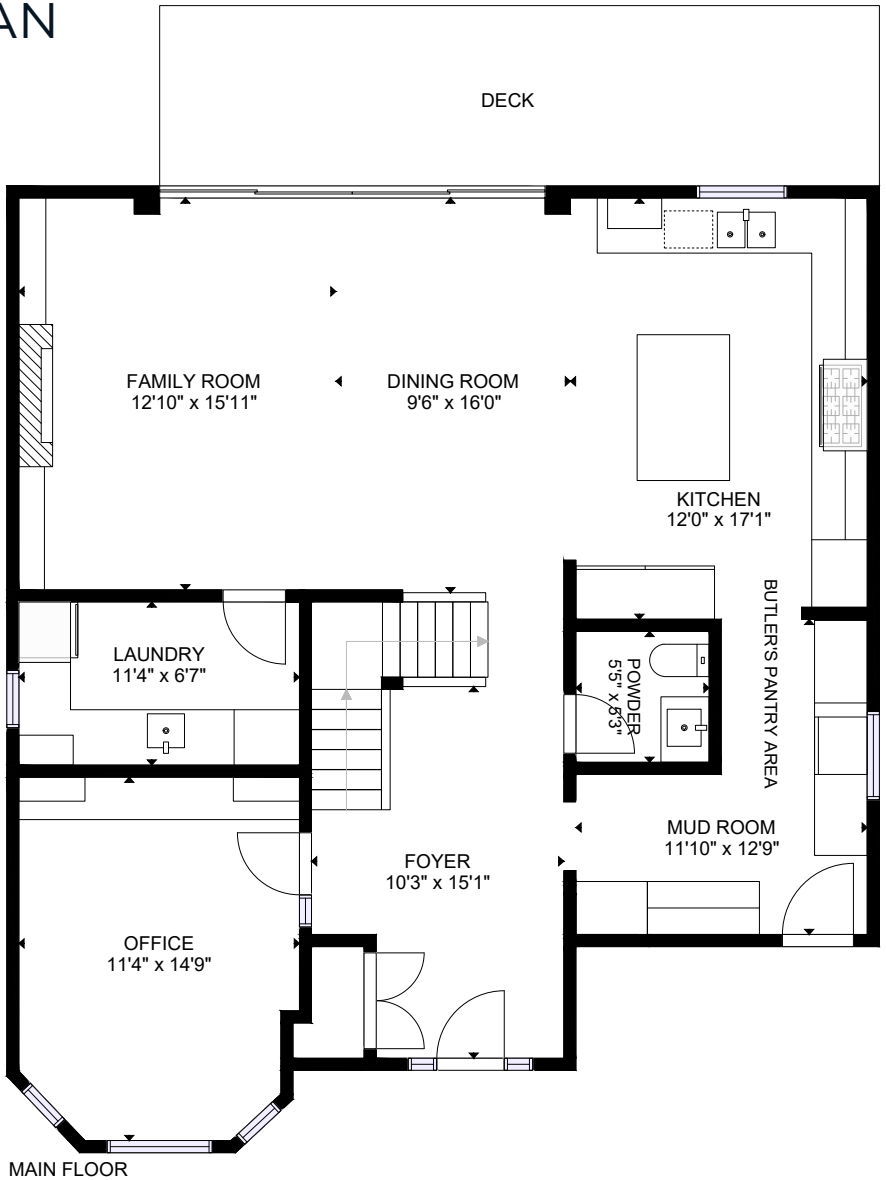
ATTIC

- New insulation installed (2022)
- Exterior
- All new soffits, flashing, and downspouts (2022)
- Soffit pot lights
- New front door
- New windows (excluding basement) – black inside & out (2022)

MISCELLANEOUS

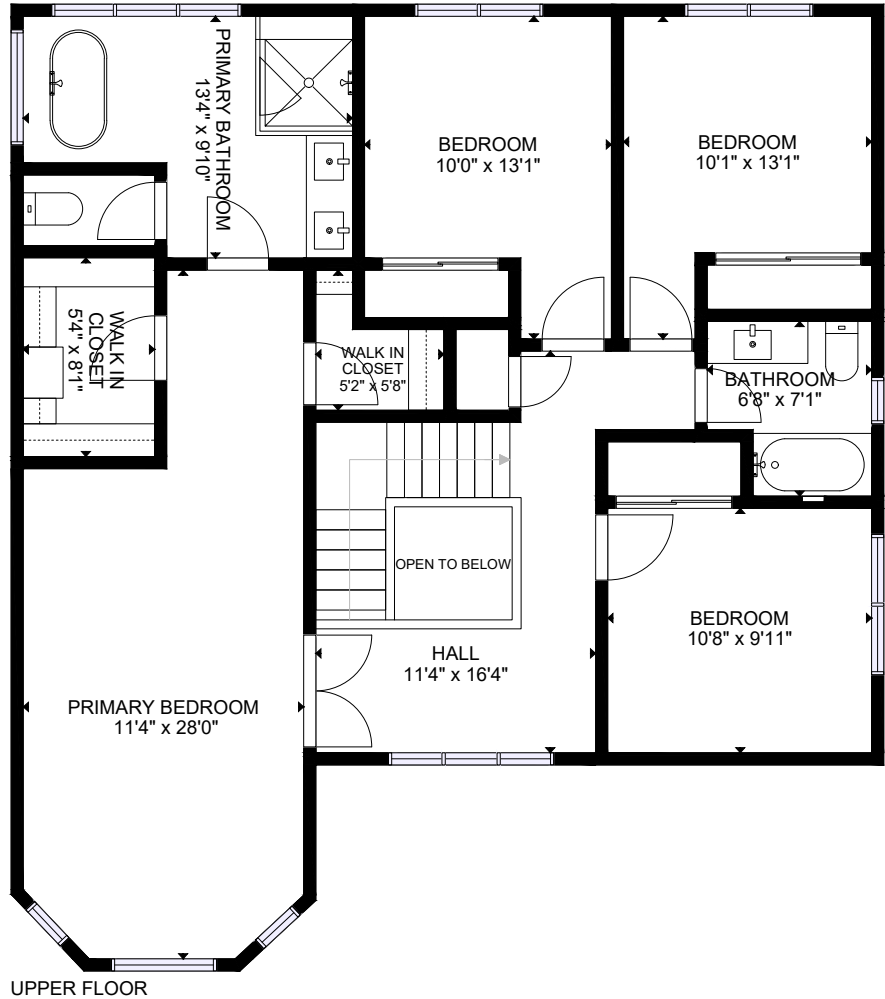
- Brand new staircase (was configured)
- Vidar white oak flooring on main & upper levels
- Pot lights throughout
- Custom millwork throughout
- New solid core interior doors
- New HVAC System (2022)
- Hot Water Heater Owned (2022)

MAIN LEVEL FLOOR PLAN

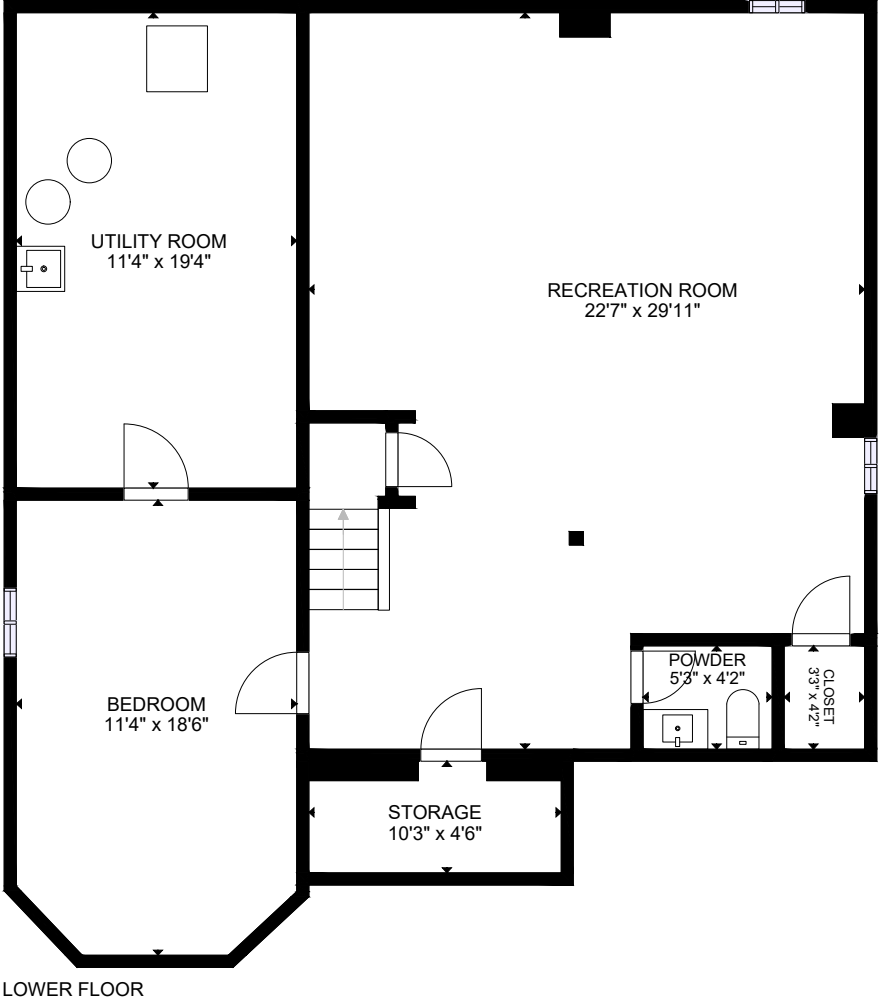


360 CLAREMONT CRESCENT

UPPER LEVEL
FLOOR PLAN




LOWER LEVEL
FLOOR PLAN



OAKVILLE PRIVATE SCHOOLS




APPLEBY COLLEGE
540 Lakeshore Road West, Oakville, L6K 3P1
Telephone: **(905) 845-4681 Ext. 169**
Website: www.appleby.on.ca
Offers grades 7 to 12 (Coed) Average class sizes of 12 to 16 students/Day and Boarding (460 day/265 boarding students)



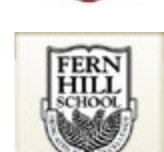
CHISHOLM ACADEMY
1484 Cornwall Road, Oakville, L6J 7W5
Telephone: **(905) 844-3240**
Website: <http://www.chisholmacademy.com/>
Offers grades 7 to 12 special needs (Coed) / Average class size of 10 students / Enrolment - 150 day students




CLANMORE MONTESSORI SCHOOL
2463 Lakeshore Road East, Oakville, L6J 1M7
Telephone: **(905) 337-8283**
Website: www.clanmore.ca
Offers PS to grade 8 (Coed) / Average class size varies / Enrolment – 125 day students



DEARCROFT MONTESSORI SCHOOL
1167 Lakeshore Road East, Oakville, L6J 1L3
Telephone: **(905) 844-2114 Ext. 0**
Website: <http://www.dearcroft.com>
Offers PS to grade 8 (Coed & French offered) / Average class size of 10 to 20 students /Enrolment – 170 day students



FERN HILL SCHOOL – OAKVILLE
3300 Ninth Line, Oakville, L6H 7A8
Telephone: **(905) 257-0022**
Website: www.fernhillschool.com
Offers preschool to grade 8 (Coed) /Average class size of 18 students / Enrolment - 400 day students



JOHN KNOX CHRISTIAN SCHOOL
2232 Sheridan Garden Drive, Oakville, L6J 7T1
Telephone: **(905) 829-8048 Ext. 300**
Website: www.jkcs-oakville.org
Offers JK to grade 8 (Coed/faith based) / Average class size of 19 to 24 students / Enrolment – 300 day students




KINGS CHRISTIAN COLLEGIATE
528 Burnhamthorpe Road West, Oakville, L6M 4K6
Telephone: **(905) 257-5464 Ext. 508**
Website: <http://www.kingschristian.ca>
Offers grade 9 to grade 12 (Coed/faith based) / Average class size of 20 students / Enrolment – 547 day students



LINBROOK SCHOOL
1079 Linbrook Road, Oakville, L6J 2L2
Telephone: **905-844-2697**
Website: www.linbrook.ca
Scheduled to open September, 2014 / (Call for details) / Maximum enrolment – 180 boys




MACLACHLAN COLLEGE
337 Trafalgar Road, Oakville, L6J 3H3
Telephone: **(905) 844-0372 Ext. 235**
Website: <http://www.maclachlan.ca/>
Offers PK to grade 12 (Coed) / Average class size of 15 students / Enrolment – 300 day students



OAKVILLE CHRISTIAN SCHOOL (OCS)
112 Third Line, Oakville, L6L 3Z6
Telephone: **(905) 825-1247 Ext. 221**
Website: <http://www.ocsonline.org>
Offers PS to grade 8 (Coed/faith based) / Average class size of 20 students / Enrolment – 230 day students



ROTHERGLEN SCHOOL – OAKVILLE ELEMENTARY
2050 Neyagawa Boulevard, Oakville, L6H 6R2
Telephone: **(905) 849-1897 Ext. 240**
Website: www.rotherglen.com
Offers grade 1 to grade 8 (Coed) / Average class size of 18 students / Enrolment – 475 day students



ROTHERGLEN SCHOOL – OAKVILLE PRIMARY
2045 Sixth Line, Oakville, L6H 1X9
Telephone: **(905) 338-3528 Ext. 11**
Website: www.rotherglen.com
Offers PS to grade 1 (Coed) / Average class size of 15 students / Enrolment – 175 day students



ST. MILDRED’S-LIGHTBOURN SCHOOL
1080 Linbrook Road, Oakville, L6J 2L1
Telephone: **(905) 845-5830 Ext. 814**
Website: www.smls.on.ca
Offers PS to grade 12 (Girls) / Average class size of 17 students / Enrolment - 600 day students



WALDEN INTERNATIONAL SCHOOL
2035 Upper Middle Road East, Oakville, L6H 7G6
Telephone: **(905) 338-6236**
Website: www.walden-internationalschooll.com
Offers PK to grade 8 (Coed) / Average class size of 8 to 18 students / Enrolment – 350 day students



WILDWOOD ACADEMY
2250 Sheridan Garden Drive, Oakville, L6J 7T1
Telephone: **(905) 829-4226 Ext. 0**
Website: www.wildwoodadmin.wix.com
Offers grade 2 to grade 8 – special needs/alternative (Coed) / Average class size of 10 students / Enrolment – 60 day students

Information is deemed correct, but not guaranteed. Please contact individual school for updated information.

OAKVILLE SCHOOLS

HALTON BOARD OF EDUCATION
2050 Guelph Line, Burlington, ON L7R 3Z2
905-335-3663 Fax 905-335-9802
www.haltonsb.on.ca/navbar.asp

OAKVILLE ELEMENTARY SCHOOLS

ABBAY LANE PUBLIC SCHOOL 905-827-5552
1160 Old Abbey Lane, Oakville, ON L6M 1S4 (JK-8)

BROOKDALE PUBLIC SCHOOL 905-827-2741
1195 Bridge Road, Oakville, ON L6L 2C3 (JK-8)

CAPTAIN R. WILSON PUBLIC SCHOOL 905-465-3881
2145 Grand Oak Trail, Oakville, ON L6M 4S7 (JK-8)

EASTVIEW PUBLIC SCHOOL 905-827-1541
2266 Hixon Street, Oakville, ON L6L 4T4 (JK-8)

E. J. JAMES PUBLIC SCHOOL* 905-845-2015
338 Cairncroft Road, Oakville, ON L6L 4M6 (1-8)

EMILY CARR PUBLIC SCHOOL 905-827-3928
2255 Pine Glen Road, Oakville ON L6M 0G5 (JK-8)

FALGARWOOD PUBLIC SCHOOL 905-845-7478
1385 Gainsborough Drive, Oakville, ON L6H 2H7 (JK-8)

FOREST TRAIL PUBLIC SCHOOL* 905-469-0341
1406 Pine Glen Road, Oakville, ON (1-8)

GLADYS SPEERS PUBLIC SCHOOL 905-827-4841
2150 Samway Road, Oakville, ON L6L 2P6 (JK-6)

HERITAGE GLEN PUBLIC SCHOOL* 905-847-5496
1641 Heritage Way, Oakville, ON L6M 2Z4 (JK-8)

JAMES W. HILL PUBLIC SCHOOL* (1-8) 905-845-2333
2860 Kingsway Drive, Oakville, ON L6J 6R3 (JK-8)

JOSHUA CREEK PUBLIC SCHOOL 905-257-7492
1450 Arrowhead Road, Oakville, ON L6H 7P9 (JK-8)

MAPLE GROVE PUBLIC SCHOOL* 905-844-9322
288 Maple Grove Drive, Oakville, ON L6J 4V5 (JK-8)

MONTCLAIR PUBLIC SCHOOL 905-845-9590
1285 Montclair Dr., Oakville, ON L6H 1Z3 (JK-8)

MUNN’S PUBLIC SCHOOL* 905-844-9461
1511 Sixth Line, Oakville, ON L6H 1X8 (1-8)

NEW CENTRAL PUBLIC SCHOOL 905-844-3081
133 Balsam Drive, Oakville, ON L6J 3X4 (JK-6)

OAKWOOD PUBLIC SCHOOL 905-845-0412
357 Bartos Drive, Oakville L6K 3E5 (JK-5)

PALERMO PUBLIC SCHOOL* 905-469-1138
2561 Valleyridge Drive, Oakville, ON L6M 5H4 (JK-8)

PILGRIM WOOD PUBLIC SCHOOL* 905-825-9808
1551 Pilgrim’s Way, Oakville, ON L6M 2W7 (JK-8)

PINE GROVE PUBLIC SCHOOL* 905-844-6371
529 Fourth Line, Oakville, ON L6L 5A8 (1-8)

POST’S CORNERS PUBLIC SCHOOL 905-845-1661
2220 Caldwell Drive, Oakville, ON L6H 6B5 (JK-8)

RIVER OAKS PUBLIC SCHOOL 905-842-7430
2173 Munn’s Avenue, Oakville, ON L6H 3S9 (JK-8)

SHERIDAN PUBLIC SCHOOL 905-845-3925
1555 Lancaster Drive, Oakville, ON L6H 3H4 (JK-5)

SUNNINGDALE PUBLIC SCHOOL* 905-844-9941
1434 Oxford Avenue, Oakville, ON L6H 1T4 (1-8)

W. H. MORDEN PUBLIC SCHOOL 905 844-9616
180 Morden Road, Oakville, ON L6K 2S3 (JK-8)

WEST OAK PUBLIC SCHOOL 905-469-6119
2071 Fourth Line, Oakville, ON L6M 3K1 (JK-8)

SECONDARY SCHOOLS

ABBAY PARK HIGH SCHOOL 905-827-4101
1455 Glen Abbey Gate, Oakville, ON L6M 2V7

GARTH WEBB SECONDARY SCHOOL 905-847-6875
2820 Westoak Trails Blvd., Oakville, ON L6M 4W2

IROQUOIS RIDGE HIGH SCHOOL* 905-845-0012
1123 Glenashton Drive, Oakville, ON L6H 5M1

OAKVILLE TRAFALGAR HIGH SCHOOL* 905-845-2875
1460 Devon Road, Oakville, ON L6J 3L6

THOMAS A. BLAKELOCK HIGH SCHOOL* 905-827-1158
1160 Rebecca Street, Oakville, ON L6L 1Y9

WHITE OAKS SCHOOL* 905-845-5200
SOUTH CAMPUS
1330 Montclair Drive, Oakville, ON L6H 1Z5

WHITE OAKS CENTRE FOR SCIENCE & TECHNOLOGY - NORTH CAMPUS 905-845-5200
1055 McCraney Street East, Oakville, ON L6H 1H9

HALTON CATHOLIC DISTRICT SCHOOL BOARD
802 Drury Lane, Burlington, ON L7R 4L3
905-632-6300
1-800-741-8382 Fax 905-333-4661
www.haltonrc.edu.on.ca

OAKVILLE CATHOLIC ELEMENTARY

HOLY FAMILY SCHOOL 905-845-6987
1420 Grosvenor St. Oakville, ON L6H 2X8 (JK-8)

MOTHER TERESA 905-825 6382
1190 Westview Terrace, Oakville, ON L6M 3N2 (JK-4)

OUR LADY OF PEACE 905-257-2791
391 River Glen Blvd., Oakville, ON L6H 5X5 (JK-8)

POPE JOHN PAUL II 905-827-8894
2130 Kingsridge Drive, Oakville, ON L6M 4Z2

ST. ANDREW 905-257-7102
145 Millbank Dr., Oakville, ON L6H 6G3 (JK - 8)

ST. BERNADETTE 905-827-7235
1201 Heritage Way, Oakville, ON L6M 3A4 (JK-8)

ST. DOMINIC 905-827-4401
2405 Rebecca Street, Oakville, ON L6L 2B1 (JK-8)

ST. JAMES 905-339-0731
255 Morden Road, Oakville, ON L6K 2S2 (JK-8)

ST. JOAN OF ARC 905-847-3581
2912 Westoak Trails Blvd., Oakville, ON L6M 4T7 (JK-8)

ST. JOHN (OAKVILLE) 905-844-3111
1480 Mansfield Drive, Oakville, ON L6H 1K4 (JK-8)

ST. JOSEPH (OAKVILLE)* 905-827-4231
477 Warminster Drive, Oakville, ON L6L 4N4 (JK-8)

ST. LUKE 905-829-1700
2750 Kingsway Drive, Oakville, ON L6J 7G5 (JK-8)

ST. MARGUERITE D’YOUVILLE* 905-849-7772
1359 Bayshire Drive, Oakville, ON L6H 6C7 (JK-8)

ST. MARY* 905-469-0038
2175 Colonel William Parkway, Oakville, ON L6M 0I

ST. MATTHEW* 905-847-0088
1050 Nottinghill Gate, Oakville, ON L6M 2G3 (JK-8)

ST. MICHAEL 905-844-6811
165 Sewell Drive, Oakville, ON L6H 1E3 (JK-8)

ST. VINCENT 905-849-0777
1280 Braeside Drive, Oakville, ON L6J 2A4 (JK-8)

CATHOLIC SECONDARY SCHOOLS

HOLY TRINITY 905-257-3534
2420 Sixth Line, Oakville, ON L6H 5Z8

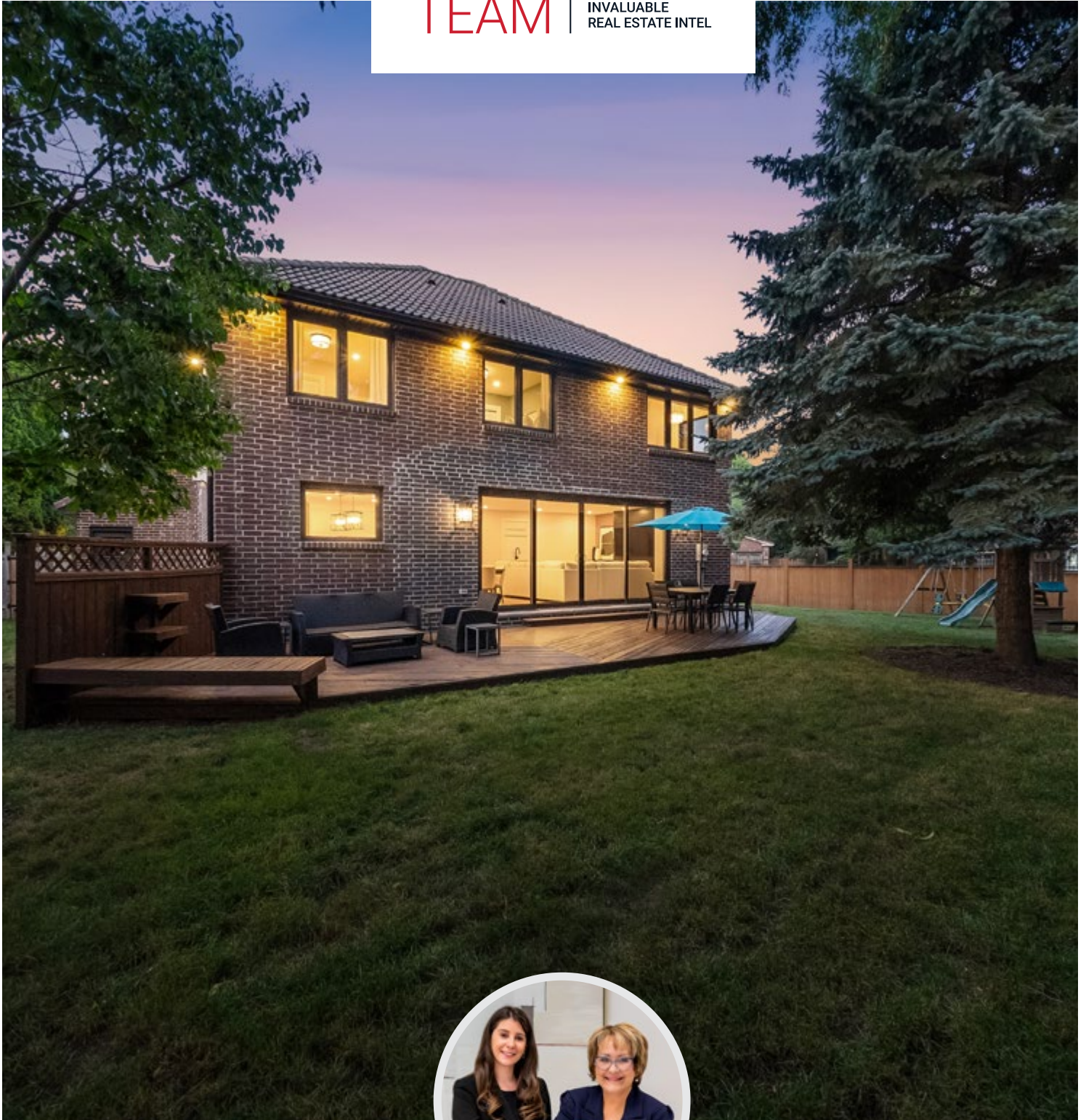
ST. IGNATIUS OF LOYOLA 905-847-0595
1550 Nottinghill Gate, Oakville, ON L6M 1S2

ST. THOMAS AQUINAS 905-842-9494
124 Dorval Drive, Oakville, ON L6K 2W1

*DENOTES FRENCH IMMERSION

SCHIRALLI TEAM

INVALUABLE
REAL ESTATE INTEL



Gianna Schiralli
PARTNER, BROKER

direct: 289.888.1972
gianna@theschiralliteam.com



Mary Ann Schiralli
PARTNER, SALES REPRESENTATIVE

direct: 289.242.9616
maryann@theschiralliteam.com